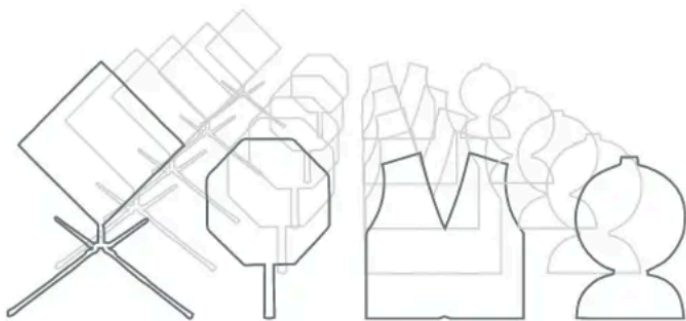


DICKE SAFETY PRODUCTS



Work Zone Safety Equipment





SB243AT-LED
Lighted Roll-up Stop/Slow Paddle

- Meets all MUTCD specifications.
- 24 bright white perimeter LEDs.
- Roll-up style made with Super Bright™ reflective material.
- Push button for on/off, steady burn, and two flashing modes.
- Heavy duty storage bag with hook & loop closures.
- See page 26 for more information.



— CRASH TESTED TO —
MASH
SELECTED MODELS



Stands that have been crash tested to MASH have this label.

AASHTO's Manual for Assessing Safety Hardware (MASH) was released in the Spring of 2016 and is considered an updated replacement of NCHRP 350. AASHTO defines MASH as providing "uniform guidelines for crash testing permanent and temporary highway safety features and recommends evaluation criteria to assess test results." For sign stands that have been crash tested to MASH see the Sign Stand Index on page 5.



DICKE Safety Products has successfully met WBENC's standards as a Women's Business Enterprise (WBE). This certification affirms the business is woman-owned, operated, and controlled.

Sign Stands

- 4 Stand Chart
- 5 Stand Index
- 6 Sign Holder Options
- 7 UniFlex™ (UF2000 Series)
- 8 DynaFlex™ (DF3000 Series)
- 9 TwinFlex™ - Compact
- 10 TwinFlex™ - Full Size
- 11 TwinFlex™ - TF1230 & TF1240
- 12 DynaLite™ - (DL1000 Series)
- 13 ESF / ESFR
- 14 Tripods / P100
- 15 Stacker™ (DSB100 Series)
- 15 Barrier Mount

Fold & Roll® Sign System

- 16 Work Zone Traffic Control
- 17 Emergency Traffic Control

Roll-Up Signs

- 18 Roll-Up Sign Features
- 19 Sign Legends - text
- 20 Sign Pictures
- 21 Sign Pictures
- 22 Sign Pictures
- 23 Sign / Overlay Pictures
- 24 Sign Options
- 25 Flagholder Options

Stop/Slow Paddles & Kits

- 26 Lighted Roll-Up Paddle Kits
- 27 Roll-Up Paddle Kits
- 28 Rigid Paddles
- 29 Paddle Staffs

Barricade Lights

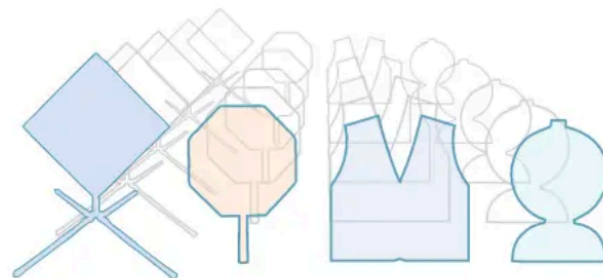
- 30 AC4D (D-Cell Series)
- 31 AC4DSL (Solar D-Cell)
- 32 B4DH (B-Light, D-Cell & Solar)
- 33 TLL (6V Series) / Accessories
- 34 EcoSynchro™ Sequential
- 35 WSCD / ProB™ Sequential

Safety Apparel

- 36 V1000 Vest
- 37 V700 Series Vests
- 38 Vests - Class 3
- 39 Vests - Class 2
- 40 Vests - Class 2
- 41 Vests - Class 2
- 42 Vests - Fire Resistant
- 43 Vests - General Purpose / Pants
- 43 Sizing Charts
- 44 Shirts
- 45 Sweatshirts / Shin Refl. / Caps
- 46 Jackets / Parkas
- 47 Rain Wear / Windbreakers

Flags, Bags, Cones, and Utility Tools

- 48 Flags
- 49 Bags / Pennants / Covers
- 50 Cones / Pocket Ref. Guides
- 51 Laddermate™ / Utility Tools



Stand Chart

Quick Reference (some models not shown)



TwinFlex™
TF18 - STF18 Series

- Full Size
- Dual spring
- Roll-up & Rigid signs
- P.10

DynaLite™
DL1008 - SDL1008

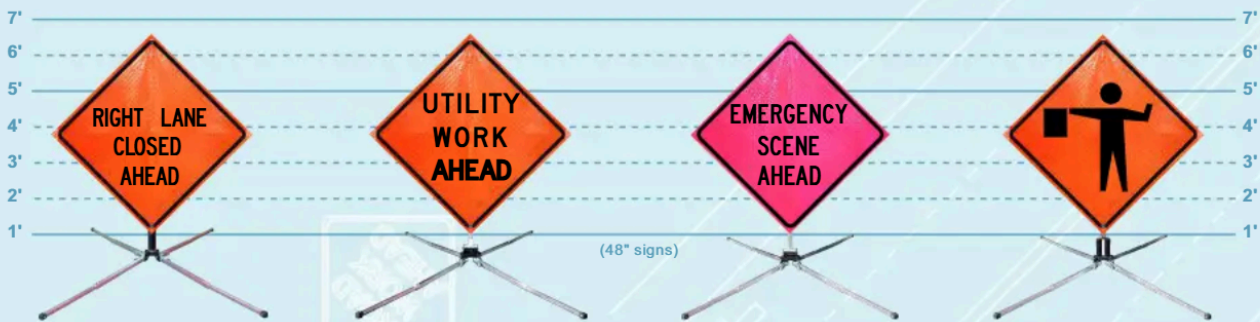
- Full Size
- No spring
- Roll-up & Rigid Signs
- P.12

TwinFlex™
STF1008

- Full Size
- Dual Spring
- Roll-up signs
- P.10

TwinFlex™
TF60/84 Series

- Full Size
- Dual Spring
- Roll-up & Rigid signs
- P.10



UniFlex™
UF2000 - SUF2000 Series

- Compact
- Single Spring
- Roll-up signs
- P.7

DynaFlex™
DF3000 Series

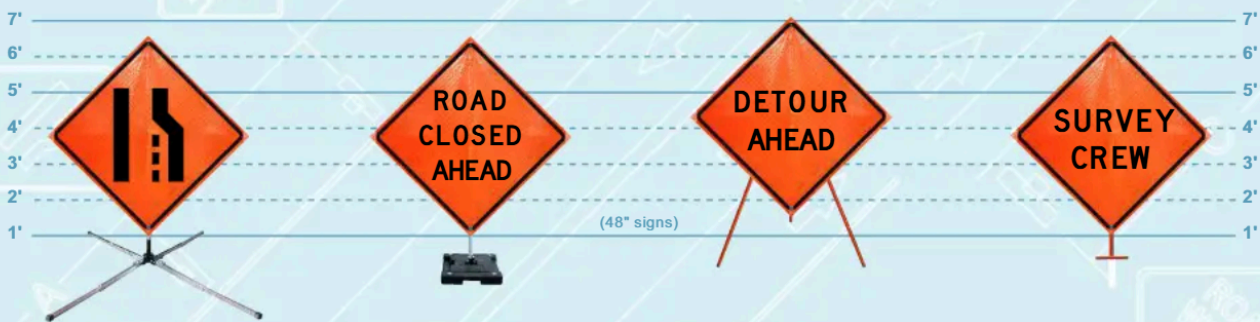
- Compact
- Torsion Spring
- Roll-up signs
- P.8

Fold & Roll® System
DF3000X Series

- Compact
- Torsion Spring
- Fold & Roll Signs
- P.16 - P.17

TwinFlex™
TF12 Series

- Compact
- Dual Spring
- Roll-up signs
- P.9



DynaLite™
DL1000 - SDL1000 Series

- Compact
- No Spring
- Roll-up signs
- P.12

Stacker™
DSB Series

- Rubber Base
- No Spring
- Roll-Up Signs
- P.15

Tripods
T55 - T155

- Tripod
- No Spring
- Roll-up & rigid signs
- P.14

In-Ground
P100

- In-ground
- No Spring
- Roll-up signs
- P.14

Stand Index

Quick Reference



Page	Model No.	Sign Type			Stand Specifications						MASH
		Roll-Up	Rigid	Fold & Roll	Sign Height (w/48" Sign)	Spring	Storage Size	Open Footprint	Weight lbs.		
8	DF3000P*	●			18"	●	7.5" x 7.5" x 24"	45" x 71"	17	●	
8	DF3000S			●	12"	●	7.5" x 7.5" x 24"	45" x 71"	19		
8	DF3000W	●			12"	●	7.5" x 7.5" x 24"	45" x 71"	21		
8	DF3003S			●	12"	●	7.5" x 7.5" x 30"	58" x 92"	20	●	
8	DF3003W	●			12"	●	7.5" x 7.5" x 30"	56" x 92"	22		
12	DL1000L	●			12"		7" x 7" x 24"	42" x 71"	13		
12	DL1000P*	●			18"		7" x 7" x 24"	42" x 71"	13		
12	DL1000W	●			12"		7" x 7" x 24"	42" x 71"	15		
12	DL1003L	●			12"		7" x 7" x 30"	53" x 93"	14		
12	DL1003W	●			12"		7" x 7" x 30"	53" x 93"	17		
12	DL1008*	●			18"(a)		7" x 7" x 63"	46" x 77"	19	●	
15	DSB100	●			12"		3" x 20" x 28"	20" x 28"	45	●	
15	DSB100P*	●			12"		3" x 20" x 28"	20" x 28"	45		
15	DSB100-W	●			12"		3" x 20" x 28"	20" x 28"	46		
13	ESF	●			12"	●	8" x 8" x 24"	42" x 71"	17		
13	ESFR	●	●		18"(a)	●	8" x 9" x 59"	55" x 87"	30		
12	SDL1000L	●			12"		7" x 7" x 24"	41" x 69"	19		
12	SDL1000P*	●			18"		7" x 7" x 64"	41" x 69"	19		
12	SDL1000W	●			12"		7" x 7" x 24"	44" x 69"	20	●	
12	SDL1008	●	●		18"(a)		7" x 7" x 62.5"	47" x 77"	25		
10	STF1008	●	●		18"(a)		7" x 7" x 82"	52" x 73"	41	●	
11	STF1240*	●			18"(a)	●	6.5" x 6.5" x 64.5"	52" x 73"	35	●	
10	STF18	●	●		18"(a)	●	8" x 8" x 64"	36" x 84"	37		
7	SUF2000L				12"	●	7" x 7" x 24"	46" x 69"	23		
7	SUF2000W	●			12"	●	7" x 7" x 27"	46" x 69"	25	●	
14	T155	●	●		18"		4.5" x 8" x 55"	38" x 53"	18	●	
14	T55	●			18"		2" x 4.5" x 62"	48" x 57"	11		
9	TF12C	●			12"	●	7" x 7" x 30"	36" x 84"	24		
9	TF12P*	●			18"	●	7" x 7" x 30"	36" x 84"	25		
9	TF12W	●			12"	●	7" x 7" x 30"	36" x 84"	26		
11	TF1230*	●			12"(a)	●	6.5" x 6.5" x 53"	53" x 74"	30		
10	TF18	●	●		18"(a)	●	8" x 10" x 68.5"	36" x 84"	35	●	
10	TF60/84	●	●		60"(b)	●	8" x 10" x 88"	49" x 126"	47	●	
10	TF84	●	●		84"(b)	●	8" x 10" x 88"	50" x 126"	46	●	
7	UF2000P*	●			21"	●	7" x 7" x 30"	57" x 91"	21		
7	UF2000W	●			12"	●	7" x 7" x 30"	57" x 91"	22	●	

* Dicke West only

(a) Variable sign height for roll-up signs

(b) Variable sign height for roll-up and rigid signs

Compact Stands

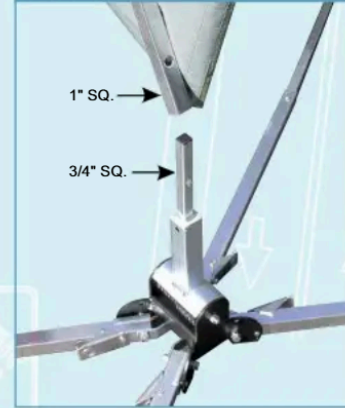
Sign Holder options

ScrewLock™ (W)



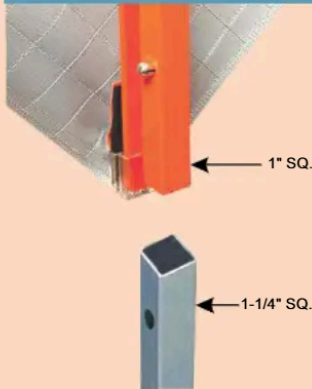
Our most universal roll-up sign holder will accept all standard 1-1/4" width fiberglass cross braces. Internal lever actuated clamp grips firmly and quickly and prevents damage from over tightening. Any stand model number ending in **W**.

StabLock™ (S)



This sign holder is used to hold our exclusive Fold & Roll™ sign panel. Vertical aluminum tubing slides down over smaller diameter base fitting, locks in place with a spring button. Any stand model number ending in **S**.

(P) Style for 1" Sq. Tubes



Post and Tube Style Sign Holder

The standard "P" style roll-up sign holder accepts signs that are equipped with a 1" square adapter tube attached to the lower cross brace. The adapter tube on the sign slides into the 1-1/4" post tube on the stand and locks securely with a spring loaded button. Model numbers ending in **P**.



Latch (L)



Signs are held in place by capturing the bottom rectangular plastic pocket on standard roll-up signs. A spring-loaded catch locks the sign into the base, a lift of the lever releases the sign. Any stand model number ending in **L**.

Channel (C)



The channel style sign holder locks the roll-up sign to the stand with a lever actuated pin. The sign's vertical fiberglass rib slides down into the channel and engages a locking pin. Used with our 400 series signs. Any stand model number ending in **C**.

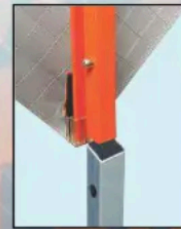
UniFlex™ - UF2000 Series

Compact Single Spring Stands for Roll-up Signs



UniFlex™, our most popular compact stand, is the perfect match for 36" and 48" roll-up signs. UniFlex™ features a heavy duty steel coil spring design providing superior stability in windy conditions. UniFlex™ stands display roll-up signs 12" off the ground and feature foot actuated kick releases with three locking positions for storage and stability on uneven terrain.

- MUTCD and NCHRP-350 compliant, selected models crash tested to MASH.
- The **UF2000W** features the Screwlock™ roll-up sign holder for standard roll-up signs.
- The **UF2000P** has the Post and Tube style sign holder and is a Dicke West exclusive (see p.6).
- Single heavy duty steel spring provides stability in gusty winds.
- Aluminum leg models feature .100" wall aircraft quality tubing, 16 ga. steel leg models have an orange powder coat finish.
- Aluminum leg length is 30" telescoping to 51". Steel leg length is 22" telescoping to 38".



UF/SUF2000P



UF/SUF2000W



SUF2000L

MODEL	SIGN HEIGHT	SIGN HOLDER TYPE	LEGS	MASH
UF2000P*	18"	Post & Tube	Aluminum	
UF2000W	12"	Screwlock™	Aluminum	•
SUF2000L		Latch	Steel	
SUF2000P*	18"	Post & Tube	Steel	•
SUF2000W	12"	Screwlock™	Steel	

*Dicke West Exclusive



UF2000W

SUF2000W

DynaFlex™ - DF3000 Series

Compact Dual Spring Stands for Roll-up Signs

— CRASH TESTED TO —
MASH
SELECTED MODELS

MODEL	SIGN HEIGHT	SIGN HOLDER TYPE	SIGN TYPE	MASH
DF3000P*	18"	"P" Post & Tube	Roll-UP	•
DF3000S	12"	"S" Stablock™	Fold & Roll™	
DF3000W	12"	"W" Screwlock™	Roll-Up	
DF3003S	12"	"S" Stablock™	Fold & Roll™	•
DF3003W	12"	"W" Screwlock™	Roll-Up	

*Dicke West Exclusive



DF3000W



DF3000S



DF3000P



DF3003W



DynaFlex™ compact stands feature steel and aluminum construction for durability and a long service life. Dual heavy duty torsion springs provide stability in gusty wind conditions.

- All DynaFlex™ stands are MUTCD and NCHRP-350 compliant, selected models crash tested to MASH.
- DynaFlex™ compact stands offer models to hold a variety of roll-up signs: standard roll-up, Fold & Roll®, and post and tube style.
- Heavy duty steel torsion spring system provides a smooth, gliding reaction to wind gusts - no whipping action.
- Legs feature foot actuated leg release with three locking positions for storage and stability on uneven terrain.
- Open footprint: DF3000 models: 45" x 71", DF3003 models: 56" x 92"



DF3003W

TwinFlex™ - TF12 Series

Compact Dual Spring Stands for Roll-Up Signs

TwinFlex™ compact stands feature steel and aluminum construction for long-lasting, dependable service. Dual heavy duty steel coil springs provide stability in gusty wind conditions. The **TF12** series compact stands are available in several models designed to display roll-up signs at a mounting height of 12" to 18". All stands feature foot-actuated leg releases with adjustable locking positions for stability on uneven terrain.

- MUTCD and NCHRP-350 compliant.
- The **TF12W** features the Screwlock™ roll-up sign holder for standard roll-up signs (see p.6).
- The **TF12C** has the Channel Style sign holder (see p.6).
- The **TF12P** has the Post and Tube style sign holder and is a Dicke West exclusive (see p.6).
- Heavy duty steel springs provide stability in gusty winds.
- Legs feature are .100" wall aircraft quality aluminum tubing and are 30" long telescoping to 51".

ROAD WORK AHEAD

TF12W

TF12C

TF12P

MODEL	SIGN HEIGHT	SIGN HOLDER TYPE

*Dicke West Exclusive

TwinFlex™ Series

Full Size Dual Spring Stands for Roll-up and Rigid Signs



TwinFlex™ full size signs stands feature steel and aluminum construction for long-lasting, dependable service. Dual heavy duty steel coil springs provide stability in gusty wind conditions. **TwinFlex™** stands are available in several models designed to display roll-up and rigid signs at a mounting height of 14" to 84" (7'). All stands feature foot-actuated leg releases with two locking positions for stability on uneven terrain.

- MUTCD and NCHRP-350 compliant, selected models crash tested to MASH.
- Models available to display roll-up and/or rigid signs.
- **TwinFlex™** features a two stage telescopic aluminum mast which allows roll-up and/or rigid signs to be displayed 18" to 84" off the ground (depending on model selected).
- Spring system provides added stability in windy conditions.
- Factory installed triple flagholder for 3/4" round flags.
- Foot operated leg releases lock legs in multiple positions to allow for storage and deployment on uneven terrain.
- Aluminum leg models feature .100" wall aircraft quality tubing, 16 ga. steel leg models have an orange powder coat finish.

MODEL	SIGN HEIGHT	ROLL-UP SIGNS	RIGID SIGNS	LEGS	MASH
-------	-------------	---------------	-------------	------	------

• Triple Flagholder

• Telescopic Mast

• Rigid Bracket (-RGB)

• Roll-Up Sign Bracket (-RUB)

TF18-RGB

• Rigid Sign Bracket (-RGB)

• Dual Heavy Duty Springs

• Non-Skid Tips

• Foot Operated Leg Release

• Orange Steel or Aluminum Legs

STF18-RGB

**ROAD
WORK
AHEAD**

TF18-RGB

TwinFlex™ - TF1200 Series

Full Size Dual Spring Stands for Roll-Up Signs



Roll-Up Sign Mounting Options

Adding a clamp to your roll-up sign allows it to be attached to the mast of the **TF1230** and the **STF1240**.

UniClamp

Allows the sign to be affixed to various size square and round masts. Attaches permanently to sign.

Dual Clamp

Features openings for 1" and 1-1/4" square masts. Attaches permanently to sign.

Tri-Clamp

Provides dedicated openings for 3/4" and 1" square and 1" round masts. Attaches permanently to sign.

Roll-Up Sign Bracket

The **RUB3315** roll-up bracket holds all 36" and 48" roll-up signs with horizontal fiber-glass ribs up to 1/4" thick. Attaches to stand.

TF1230
Stored Position

STF1240 with 48" Roll-Up Sign

MODEL	SIGN HEIGHT	ROLL-UP SIGN HOLDER TYPE	LEGS	MASH
-------	-------------	--------------------------	------	------



1 - MASH approved as with a 48" roll-up sign at 18" display height.

- TwinFlex™ **TF1230** and **STF1240** stands meet MUTCD and NCHRP-350 requirements
- **STF1240** has been crash tested to MASH with a 48" roll-up sign at a display height of 18".
- Displays both 36" and 48" roll-up signs, max. display height: 95" to the top of a 48" sign.
- Heavy duty TwinFlex™ dual spring system flexes in windy conditions for stability.
- The base is powder coated steel.
- **TF1230** legs are aircraft quality aluminum, **STF1240** legs are orange powder coated steel.
- Foot actuated leg releases provide quick set-up and tear-down.
- Two position leg height adjustment allows deployment on uneven terrain.
- Anti-skid rubber foot pads help keep stands in place.
- Telescopic mast with 1" sq. top section allows the use of many types of roll-up sign clamps and brackets.
- Mounted flagholder will hold three standard warning flags.
- Storage size: 6-1/2" x 6-1/2" x 64-1/2". Open footprint: 53" x 74".
- Max. open height (ground to top of mast): 105", Weight: **TF1230** - 30 lbs., **STF1240** - 35 lbs.

TF1230
Open Position

DynaLite™ - DL1000 Series

No Spring Stands for Roll-Up Signs



Our DynaLite™ series offers non-spring, lightweight, compact stands designed to display 36" or 48" roll-up signs. Made of powder coated steel and aircraft quality aluminum, these stands are rugged and dependable.

- MUTCD and NCHRP-350 compliant, selected models crash tested to MASH.
- **DynaLite™** compact stands offer multiple methods of roll-up sign attachment: Screwlock™, which quickly and firmly clamps to the vertical fiberglass rib, the "P" Post & Tube mounts which accommodate signs equipped with 1" square tube adapters, or the (L) Latch style sign holder which holds the sign by bottom plastic pocket. See p.6 for details.
- **SDL1000** and **DL1000** series of compact stands have 22" legs that telescope to 38".
- **DL1003** series stands have 30" legs that telescope to 51".
- **DynaLite™** full size stands feature telescopic vertical masts and triple flagholders designed to display 36" or 48" roll-up signs.
- Foot operated leg releases quickly lock legs in one of three positions to allow for storage or deployment on uneven terrain.
- **SDL1008** and **DL1008** full size stands have 42" legs.

DL1008-RUB

DL1008

See page 24
"Roll-Up Signs - Options"

SDL1008

MODEL	SIGN HEIGHT	SIGN HOLDER TYPE	LEGS	MASH
-------	-------------	------------------	------	------

* Dicke West Exclusive 1 - MASH approved with a 48" roll-up sign with clamp, 18" off the ground

DL1000W

ESFR Stand

Full Size Stand for Rigid Signs

- MUTCD and NCHRP-350 compliant.
- The original enclosed extension spring stand.
- Full size stands with 2-stage telescopic mast.
- Displays 36" and 48" rigid signs and roll-up signs (with optional **RUB3315** bracket).
- Features internal heavy duty coil spring for stability in strong winds.
- Quick set-up and tear down with foot-operated leg release system.
- Aluminum legs have two position height adjustment and anti-skid foot pads.
- Height from the ground to the bottom of a 48" rigid sign: 18"

T55 Economy

Tripod Stand for Roll-Up and Rigid Signs

The **T55** tripod is an all-purpose three legged economy sign stand designed to hold 36" and 48" roll-up and rigid signs. Powder coated steel construction and ease of use makes the **T55** a smart choice for low to medium wind conditions.

- Meets MUTCD specifications.
- NCHRP-350 compliant with a roll-up sign.
- Compact storage, economical, and easy to use.
- Holds 36" and 48" roll-up and rigid signs.
- Powder coated, all steel construction.



T155 Heavy Duty

Tripod Stand for Roll-Up and Rigid Signs

The **T155** tripod is an all-purpose three legged heavy duty sign stand designed to hold 36" and 48" rigid signs. Roll-up signs can also be displayed with the addition of the optional roll-up sign adapter (**RUB100**).

- MUTCD & NCHRP-350 compliant, crash tested to MASH.
- Telescoping mast, flagholder for 3 standard flags.
- Displays 36" and 48" rigid signs, displays roll-up signs with the addition of optional **#RUB100** roll-up sign adapter.
- Powder coated, rugged square tubular steel construction.
- Ballast hook on back leg.



T155 w/Rigid Sign



Optional **RUB100** bracket for roll-up signs

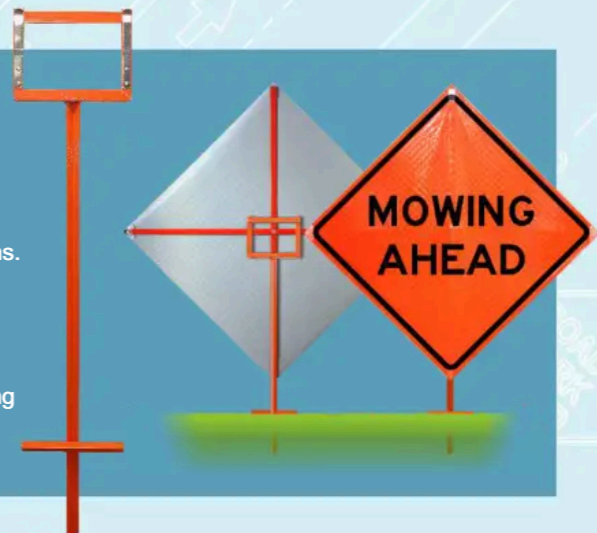


— CRASH TESTED TO —
MASH
SELECTED MODELS

P100

In Ground Stand for Roll-up Signs

- Designed to be inserted into the ground providing a solid, economical solution for displaying 36" and 48" roll-up signs.
- Constructed of heavy duty welded steel bar angle.
- Orange powder coat finish.
- Dual steel spring clips that hold signs securely.
- Cross piece at the ground level for stability and for pushing the stand into the ground by foot.



DSB100 Stacker™

Rubber Base Stands for Roll-Up Signs

The **DSB100 Stacker™** sign stand displays both 36" and 48" roll-up signs. Made of rubber from recycled tires, the **DSB100** has a small foot print, compact storage, and several different models from which to choose. **DSB100** features a Latch style pocket sign holder for standard roll-up signs, the **DSB100-W** (see p.6) comes with the Screwlock™ universal roll-up sign holder, the **DSB100-P** is has a Post and Tube style sign holder (see p.6).



DSB100

MODEL	SIGN HOLDER TYPE	SIGN TYPE	MASH
DSB100	Latch	42 lbs.	•
DSB100-P*	Post and Tube	43 lbs.	
DSB100-W	Screwlock™	43 lbs.	

* Dicke West Exclusive



DSB100 with 48" roll-up sign

12"



DSB100

See p. 6 for sign holder details



DSB100-P



DSB100-W



JBM Series



JBM Series

Barrier Mount Stands for Roll-Up Signs

Barrier mount sign stands are designed to display 36" and 48" rigid and roll-up signs on concrete highway barriers. Units are firmly affixed using multiple heavy duty screws. All models feature aluminum masts with either rigid or roll-up brackets depending on model and sign type. The **JBM-TF18** series features a double spring system for added stability in windy conditions.

MODEL	BARRIER WIDTH	SIGN TYPE
JBM-TF18-RU	3-1/8" to 12"	Roll-up
JBM-TF18-RG	3" to 12"	Rigid
JBM-TF18-RG/RU	3" to 12"	Rigid & Roll-up

Fold&Roll®

Complete Sign System for Work Zone Traffic Control

- MUTCD & NCHRP-350 compliant, selected models crash tested to MASH.
- Sign detaches from stand for changeability of legends.
- Stand features the Stablock™ sign holder, telescoping legs with kick releases, and torsion spring system which reacts smoothly to gusty wind conditions.
- Systems include a double flagholder and two 18" vinyl flags.
- Additional color choices available, contact us for details.
- Storage bags available, see p.45.
- DF3000X36 - 36" System - 28 lbs.
- DF3003X48 - 48" System - 31 lbs.



The ORIGINAL Fold & Roll® Sign System

The DF3000X series Fold & Roll® Sign System utilizes a collapsible leg and sign design for compact storage and ease of transport to and from the work zone. The need for separate storage locations for stand and sign is eliminated. The Dicke patented leg kick release and snap-in hub mechanism insures *fast, hassle free set-up* allowing crews to be safer and more productive.

Complete 36" Systems

MODEL	SIGN MATERIAL	STAND ONLY	SIGN ONLY
DF3000X36	Super Bright™ Reflective	DF3000S	3000XP-36
DF3000X36MAR	Marathon™ Reflective	DF3000S	3000XP-36MAR
DF3000X36NR	Solid Vinyl Non-Reflective	DF3000S	3000XP36-NR

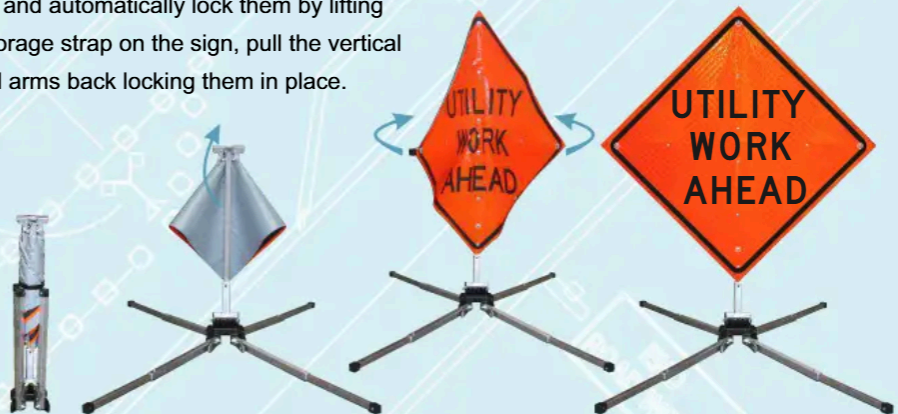
Complete 48" Systems

MODEL	SIGN MATERIAL	STAND ONLY	SIGN ONLY	MASH
DF3003X48	Super Bright™ Reflective	DF3003S	3000XP-48	●
DF3003X48MAR	Marathon™ Reflective	DF3003S	3000XP-48MAR	●
DF3003X48NR	Solid Vinyl Non-Reflective	DF3003S	3000XP-48NR	●

Lightning Fast Set-Up

Lower the legs using the kick releases and automatically lock them by lifting up on the stand. Release the velcro storage strap on the sign, pull the vertical support arm upward and the horizontal arms back locking them in place.

- DF3000X36 - 36" System - 28 lbs.
- DF3003X48 - 48" System - 31 lbs.

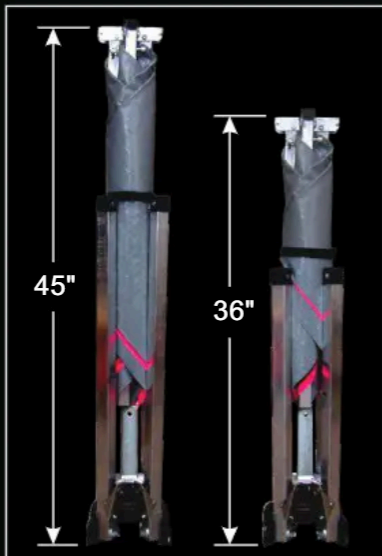


Fold & Roll®

Complete Sign System for Emergency Traffic Control

The **Fold & Roll**® sign and stand combination brings ultra compact system storage and lightning fast deployment to emergency traffic control. Designed so that a full 48" sign and stand combo fits easily into the trunk of a squad car or a small storage compartment on a truck, the **Fold & Roll**® sets up faster than any other system in the industry allowing responders to concentrate fully on task at hand. Sign faces are made of fluorescent pink reflective material recommended by the FHWA and NFPA for use at emergency scenes.

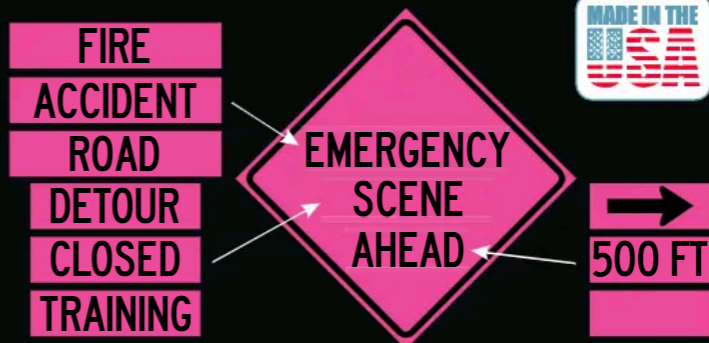
Sets up in less than 20 seconds!



Storage configuration for complete 48" and 36" sign systems

Complete Systems

MODEL	SIGN MATERIAL	STAND ONLY	SIGN ONLY	MASH
DF3000X36PNK	Super Bright™ Reflective	DF3000S	3000XP-36PNK	
DF3003X48PNK	Super Bright™ Reflective	DF3003S	3000XP48PNK	•



Signs become more versatile with the addition of velcro and overlays. Many other sign legend and overlay variations available on request.

Roll-Up Signs

Features



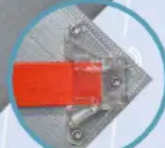
48" Reflective Roll-Up Sign



Velcro Strap for Storage



Flag Options
See p.25

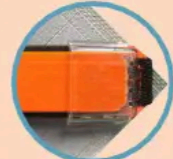


Delta Pockets
(Left & Right Corners)



Full Pockets
(Top & Bottom Corners)

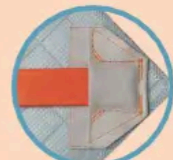
DICKE WEST EXCLUSIVE



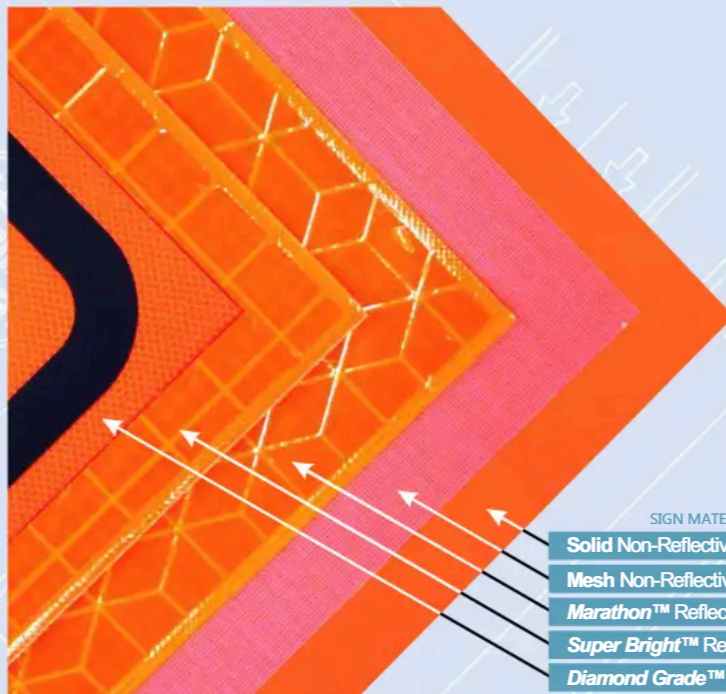
Buckle



Cloth Pockets



Cloth Delta Pockets



Roll-Up Sign Materials

Available in a variety of materials and sizes, roll-up signs offer full size signage in a lightweight and easy to store design.

- All signs are MUTCD compliant and, when used with approved stands, meet the crash worthiness requirements of NCHRP-350.
- See materials list below.
- Fiberglass ribs (or cross bracing) feature a protective veil to prevent blooming and splinters.
- Hook and loop strap for storage.
- Overlays available for changeable message signs.

SIGN MATERIALS	ORANGE	PINK	WHITE	YEL/GRN	YELLOW
Solid Non-Reflective	●		●		
Mesh Non-Reflective	●		●		
Marathon™ Reflective	●		●	●	
Super Bright™ Reflective	●	●	●		●
Diamond Grade™ Reflective	●		●		

Abrupt Edge	Loose Gravel (W8-7)	Shoulder Closed Ahead
Accident Ahead	Men Working	Shoulder Drop Off Symbol (W8-17)
Be Prepared To Stop (W3-4)	Men Working Ahead	Shoulder Work (W21-5)
Begin Work Zone	Merge Left	Shoulder Work Ahead
Bike Lane Closed Ahead	Merge Right	Sidewalk Closed
Bike Symbol Share The Road	Merge Symbol Left (W4-1L)	Signal Work Ahead
Bikes on Roadway	Merge Symbol Right (W4-1R)	Single Lane Ahead (W20-6)
Border Only	Motorcycles Use Extreme Caution	Slow
Bridge Work Ahead	Mowing Ahead	Smoke Limited Visibility
Brush Cutter Ahead	Narrow Lane (C12)	Special Event Ahead
Bump (W8-1)	New Traffic Pattern Ahead (W23-2)	Speed Limit XX (R2-1)
Bump Ahead	No Right Turn (Text)	Speed Reduction Ahead Sym. (W3-5)
Caution Log Trucks	No Right Turn Symbol (R3-1)	Steel Plate Ahead (W8-24)
Center Lane Closed Ahead (W20-5C)	No Left Turn (Text)	Stop Ahead Symbol (arrow) (W3-1)
Construction Ahead	No Left Turn Symbol (R3-2)	Stop for Pedestrians (R1-6A)
Danger Overhead Power Lines	One Lane Ahead	Stop Sign Symbol (octagon) (R1-1)
Detour with Velcro	One Lane Road Ahead (W20-4)	Survey Crew (W21-6)
Detour Ahead (W20-2)	Pipeline Construction Ahead	Survey Crew Ahead
Dip (W8-2)	Pipeline Crossing Ahead	Timber Falling
Do Not Pass (R4-1)	Prescribed Burn Ahead	Transition Right Symbol (W4-2L)
Emergency Scene Ahead	Prescribed Burn Ahead Do Not Report	Transition Left Symbol (W4-2R)
Emergency Truck Repair Ahead	Ramp Closed	Transition Symbol (Double)
End Road Work (G20-2)	Ramp Closed Ahead	Tree Work Ahead
End Utility Work	Ramp Closed Kit with overlays	Truck Crossing (W8-6)
End Work Zone	Ramp Work Ahead	Trucks Entering and Leaving Highway
Exit - W/ Arrow	Reduced Speed Ahead (R2-5)	Trucks Entering Highway
Fire Activity Ahead	Reduce Speed Ahead Symbol (W3-5)	Trucks Entering Roadway
Flagger Ahead (W20-7)	Reverse Curve Arrow symbol-Left (W1-4L)	Trucks Entering Exiting
Flagger Symbol (W20-7A)	Reverse Curve Arrow symbol-Right (W1-4R)	Uneven Lanes (W8-11)
Flagger Paddle Symbol - short staff	Right Lane Closed	Utility Work Ahead (W21-7)
Flagger Paddle Symbol - long staff	Right Lane Closed Ahead (W20-5R)	Water Over Road (W14-7)
Fresh Oil (W21-2)	Right Two Lanes Closed Ahead (W20-5A)	Work Area Ahead
Grooved Pavement (W8-15)	2 Right Lanes Closed Ahead (C20)	Work Zone Begins
Guardrail Damage Ahead	Right Shoulder Closed (W21-5A)	Worker Symbol (W21-1A)
High Water	Right Shoulder Closed Ahead (W21-5B)	Workers Ahead
Incident Ahead	Road Closed (R11-2)	Wreck Ahead
Keep Left with Arrow Symbol (R4-8A)	Road Closed Ahead (W20-3)	Yield Ahead Symbol (arrow) (W3-2)
Keep Right with Arrow Symbol (R4-7A)	Road Closed to Thru Traffic (R11-4)	Yield Symbol (R1-2)
Lane Closed (C30)	Road Machinery Ahead (W21-3)	Yield for Pedestrians (R1-6)
Lane Closed Ahead	Road Work Ahead (W20-1)	Yield To Oncoming Traffic
Left Lane Closed	Rough Road (W8-8)	
Left Lane Closed Ahead (W20-5L)	Rumble Strips	
Litter Crew Ahead	Rumble Strips Ahead	
Log Trucks Entering Highway	Shoulder Closed	

Roll-Up Signs

**ABRUPT
EDGE**

**ACCIDENT
AHEAD**

**BE
PREPARED
TO STOP**

**BEGIN
ROAD WORK**

BUMP

**BEGIN
WORK ZONE**

W3-4

W8-1

DETOUR

DETOUR

**DETOUR
AHEAD**

**EMERGENCY
SCENE
AHEAD**

**END
ROAD WORK**

G20-2

**END
WORK ZONE**

Detour
with Octagonal Overlay

Detour
with Rectangular Overlay

W20-2

**FLAGGER
AHEAD**

W20-7a

Flagger Symbol
W20-11

Flagger-Paddle Symbol
(Full Length Staff)

Flagger-Paddle Symbol

W21-2

**FRESH
OIL**

**HIGH
WATER**

W16-5

**LANE
CLOSED
AHEAD**

**LEFT
LANE
CLOSED**

**LEFT LANE
CLOSED
AHEAD**

W20-5L

**LEFT
SHOULDER
CLOSED**

**LEFT
SHOULDER
CLOSED
AHEAD**

W21-5bL

**LITTER
CREW
AHEAD**

**LOOSE
GRAVEL**

W8-7

**MEN
WORKING**

**MEN
WORKING
AHEAD**

**MERGE
LEFT**

**MERGE
RIGHT**

W4-1L

W4-1R

Merge Symbol W4-1
with Overlays

**MOTORCYCLES
USE EXTREME
CAUTION**

**MOWING
AHEAD**

W21-8

**NARROW
LANE**

C12

**NO
LEFT
TURN**

**NO
RIGHT
TURN**

**NO
SHOULDER**

W8-23

No Left Turn Symbol
R3-2

No Right Turn Symbol
R3-1

**ONE LANE
ROAD
AHEAD**

**PIPELINE
CONSTRUCTION
AHEAD**

**PRESCRIBED
BURN
AHEAD**

**REDUCED
SPEED
AHEAD**

R2-5a

**SPEED
LIMIT
45**

Reduced Speed Limit Ahead
W3-5

Reverse Curve Left
W1-4L

Reverse Curve Right
W1-4R

**RIGHT
LANE
CLOSED**

**RIGHT LANE
CLOSED
AHEAD**

W20-5R

**RIGHT
SHOULDER
CLOSED**

**RIGHT
SHOULDER
CLOSED
AHEAD**

W21-5bR

**ROAD
CLOSED**

Road Closed
R11-2

Roll-Up Signs

**ROAD
MACHINERY
AHEAD**

W20-3

**ROAD
NARROWS**

W5-1

**ROAD
WORK
AHEAD**

W20-1

**ROUGH
ROAD**

W8-8

**SHOULDER
CLOSED**

**SHOULDER
CLOSED
AHEAD**

**SHOULDER
WORK**

**SHOULDER
WORK
AHEAD**

Shoulder Drop-Off Symbol Right
W8-17R

W21-5

**SIDEWALK
CLOSED**

**SIGNAL
WORK
AHEAD**

SLOW

**SPECIAL
EVENT
AHEAD**

Signal Ahead
W3-3

**SPEED
LIMIT
55**

R2-1

**STEEL
PLATE
AHEAD**

W8-24

R1-1

Stop Ahead
W3-1

**SURVEY
CREW**

Survey Crew
W21-6

**SURVEY
CREW
AHEAD**

**TREE
WORK
AHEAD**

Transition Left (Right Lane Ends)
W4-2R

Transition Right (Left Lane Ends)
W4-2L

Double Transition Symbol with Overlay
(Left/Right Lane Ends)

**TRUCK
CROSSING**

W8-6

**TRUCKS
ENTERING
AND LEAVING
HIGHWAY**

**TRUCKS
ENTERING
HIGHWAY**

**TRUCKS
ENTERING
EXITING**

**UNEVEN
LANES**

W8-11

**UTILITY
WORK
AHEAD**

W21-7

**WATER
OVER
ROAD**

W14-7

**WORK
AREA
AHEAD**

**WORKERS
AHEAD**

Worker Symbol
W21-1

**WORK
ZONE
BEGINS**

**WRECK
AHEAD**

YIELD

R1-2

Yield Ahead
W3-2

Border Only

Overlays covering a single word can be used on many signs to change the message.
Made of the same material with many standard and custom messages available.
See p24 for more information.

		500 FT			
		1000FT			
LEFT	RIGHT LANE	1500FT	500 FT	EMERGENCY	FIRE
	CLOSED			SCENE	ACCIDENT
	AHEAD	1 MILE		AHEAD	ROAD
					DETOUR
					CLOSED
					TRAINING

Roll-Up Signs - Options

Standard Pockets

Rectangular Pocket

Full depth design, typically used at the top and bottom corners of the sign. Made of tough polycarbonate, they work with all pocket style sign holders.

Used on horizontal corners, 3/4" depth is easier to deploy than conventional pockets. Three rivet points for added strength. Polycarbonate.

Additional West Pocket Styles

Made of tough polycarbonate material, attached to the sign with elastic which keeps constant tension on the sign in hot and cold weather.

Sewn to the sign face and made of nylon reinforced vinyl. These pockets are flexible, easy to use and allow for the smallest rolled up storage diameter.

Featuring more stitching for maximum strength. Vinyl pockets are flexible and easy to use and allow for the smallest rolled up storage diameter.

Roll-Up Sign Bracket

RUB3315

Snap and lock design allows signs without clamps to be mounted to the vertical mast on full size stands.

Mast Clamps for Roll-Up Signs

Allows the sign to be affixed to various size square & round masts.

Features openings for 1" and 1-1/4" square masts.

Features dedicated openings for 3/4" and 1" square as well as 1" round masts.

**DICKE
WEST
EXCLUSIVE**

Overlays

Standard Removable Overlays

Most signs may have velcro added to specific words allowing for multiple messages to be displayed using a single sign. Overlays are made from the same material as the sign and come with velcro strips on the back. Snap attachment also available on request.

Standard Removable Overlay

Permanent "Page Over" Overlay
(eliminates the risk of lost overlays)

**DICKE
WEST
EXCLUSIVE**

Permanently Attached Flag Systems

FFS-2 Folding Flag System

Designed to allow permanently mounted warning flags to be quickly locked in place, flags deploy by rotating into the display position and sliding the clip down. Reverse for storage. Flags are 18" x 18" blaze orange vinyl coated nylon on 1" wide fiberglass staffs.

FFS-12 Folding Flag System

This permanently attached folding flag system insures that flags will always be handy and ready to deploy. Rotate flags from their storage position to the display position for use, reverse to store sign. Flags are 18" x 18" blaze orange vinyl coated nylon on 1" wide fiberglass staffs. **FFS-12** has 2 flags, **FFS-13** has 3 flags. Must be used with the Buckle corner system.



Flagholders for Detachable Flags

FHRU

RL-FH3

FH3010-S

FH-STABLOCK

These flagholders are made of zinc plated steel and are designed for use with standard warning flags that have a 3/4" round staff. For flags see p.48.

- **FHRU** - Has a front and back plate that clamp together with four nuts and screws allowing the flagholder to be attached to the vertical rib of a roll-up sign without drilling a hole through the rib. Displays three flags.
- **RL-FH3** - Has a channel shaped plate and a single hole allowing it to be attached to the vertical rib of a roll-up sign with a single nut and bolt, a 1/4" hole in the vertical rib is required. Displays three flags.
- **FH3010-S** - This flagholder comes installed on our full size sign stands, such as the TF18, and may be attached with screws to replace damaged units or added to rigid signs, barricades, or posts and has spring clips to secure the flags. Displays three flags.
- **FH-STABLOCK** - Designed for use with the Fold and Roll® sign system, this flagholder sockets into the 1" square vertical tube and locks in place with a spring button. Displays two flags.

- Meets all MUTCD specifications.
- Great for flagging in stormy weather, fire and police emergency scenes, vehicle recovery operations, disaster operations, and high risk infrastructure planned night work.
- Octagon sign is made of reflective Super Bright™ material.
- 24 bright white perimeter LEDs.
- Push button for on/off, steady burn, and two flashing modes.
- Up to 48 hours flashing time on three AAA batteries.
- Roll-up design protects the sign face and provides compact storage.
- Two position telescopic staff provides 6' and 7' display heights.
- Handle and staff are ABS plastic with tube and socket connectors and locking spring buttons.
- Heavy duty vinyl storage bag with hook & loop closures included.

Stop/Slow Paddles - Roll-Up

Complete Paddle Kits

Roll-Up Stop/Slow paddles offer full size paddles in a compact, lightweight, and easy to store design. Available in 18" and 24" octagons and in a variety of reflective and non-reflective materials, these kits come complete with double sided roll-up sign face, handle, and storage bag.

- Roll-up Stop/Slow paddles meet all MUTCD specifications.
- Available in reflective (Super Bright™, Diamond Grade™, High Performance Marathon™, or non-reflective vinyl).
- Your choice of 18" or 24" octagon.
- Station options include telescopic and 3 piece snap together models providing 6' and 7' display heights (from bottom of sign to ground).
- Kits include the sign face, handle sections, and protective storage bag.

2-pc. Sta ff- 6' Height*

SIZE

MATERIAL

2-pc. Sta ff- 7' Height*

Telescopic Sta ff- 6' and 7' Height*

SIZE

MATERIAL

* Height measured from the ground to the bottom edge of the sign

Rigid stop/slow paddles are available in both 18" and 24" octagon versions with reflective and non-reflective surfaces. Choose either plastic or aluminum substrates. All rigid stop/slow paddles come with a 12" ABS plastic handle attached. Full-length one piece, two-piece, and telescoping staffs available to accommodate standard paddle height requirements (see pg. 29).

- Meet all MUTCD specifications.
- Your choice of 18" or 24" octagon.
- STOP/STOP versions are available on request.

Aluminum Stop/Slow

MODEL

SIZE

MATERIAL

Plastic Stop/Slow

MODEL

SIZE

MATERIAL

RG-HA - Replacement handle
for rigid stop/slow paddles.

Standard Stop/Slow Staffs

Our standard stop/slow staff is designed for durability and ease of use. Heavy duty ABS plastic tube and socket connectors with locking spring buttons make deployment and take-down a snap. Staffs feature flat surfaces front and back which aid the user in determining the sign's orientation. A thick rounded bottom cap protects the staff from wear while making the unit easy to rotate.

Staff Options

MODEL

* Height measured from the ground to the bottom edge of the sign

Heavy duty ABS plastic tube and socket connectors with locking spring buttons.

Staffs feature flat facets front and back which helps the user maintain the sign's orientation.

Barricade Lights - D-Cell

On/Off and
Mode Switches

Battery Case w/Indicators

Color Selection

Hardware
(Per Case of 10 Lights)

Battery Case
Snaps In and Out

AC4D

D-Cell LED Barricade Light

- The **AC4D** Series exceeds ITE standards and MUTCD visibility specifications.
- LED operates on 2 or 4 D-cell batteries (not incl.).
Battery life: 60 - 90 days (w/4 new batteries).
- Three modes of operation, Flash (**Type A**), Steady Burn (**Type C**), and Off.
- Tested by a Coast Guard approved laboratory.
- Equipped with a photocell which turns light on at dusk and off at dawn.
- Optically correct polycarbonate lens, high impact case, and stainless steel contacts.
- Lightweight, may be self-certified for compliance with NCHRP-350 crash test standards.
- **AC4D** has an amber lens with case color choices of yellow, black, and blue.
- **AC4D-RL** comes with a red lens and yellow case.
- **MAC4D** comes with a mono-directional amber lens and yellow case.
- Standard package: 10 lights, 10 bolts, 10 switch keys, and 1 socket.
- Package weight: 17 lbs.

MAC4D

MODEL	DESCRIPTION	MODEL	DESCRIPTION
-------	-------------	-------	-------------

AC4DSL Solar D-Cell LED

On/Off/Mode Switches

Battery Case w/Indicators

Hardware
(Per Case of 10 Lights)

Battery Case
Snaps In and Out

Maximizing Work Zone Safety - Minimizing Environmental Impact

The AC4DSL is a dual Solar/D-cell barricade light powered by an extremely efficient solar panel, D-cell batteries, or a combination of both. Combining power supplies provides longer operational life and greatly reduces the frequency of battery changes thus increasing worker safety and reducing battery disposal. During daylight hours the solar panel charges the batteries, even in overcast conditions.

- The **AC4DSL** exceeds ITE standards and MUTCD visibility specifications.
- LED operates on 2 or 4 D-cell batteries (not incl.), solar charging cells, or a combination of both.
- Maintenance free operational life is about 5 years in optimal conditions with the combination of quality D-Cell batteries, solar cells, and our "Smart Circuit" technology.
- Three selectable modes: Flash (**Type A**), Steady-Burn (**Type C**), and Off.
- Time required to fully charge solar cells: 23 hours in optimal sunlight.
- Solar cell battery life: Flashing mode (from full charge) - 9 days.
- Solar cell battery life: Steady-Burn mode (from full charge) - 7 days.
- Equipped with a photocell which turns light on dusk and off at dawn.
- Optically correct polycarbonate lens, high impact case, and stainless steel contacts.
- Lightweight, may be self-certified for compliance with NCHRP-350 crash test standards.
- Tested by a Coast Guard approved laboratory.
- Bolt protectors available at extra cost.
- Supplemental D-cell batteries not included.
- Standard package: 10 lights, 10 - bolts, 10 switch keys, and 1 socket. Package weight: 19 lbs.

Barricade Lights - High Intensity

- Exceeds ITE standards and MUTCD visibility specifications.
- Independently tested by a Coast Guard approved laboratory.
- High intensity (**Type B**) with LED light source operates on 2 or 4 D-cell batteries (not incl.), onboard solar charging cells, or a combination of both.
- Maintenance free operational life is about 5 years in optimal conditions with the combination of quality D-Cell batteries, solar cells, and our "Smart Circuit" technology.
- Three modes: Flashing/Dim (extends battery life), Flashing/No Dim, or Off.
- Charge time: 2 days.
- Run time for solar cells (non-dim mode): 3 days. (dim mode): 5 days.
- Mono-directional lens with attached visor to eliminate sun glare.
- Features optically correct UV stabilized polycarbonate lens, high impact visor and case, and stainless steel contacts.
- May be self-certified for compliance with NCHRP-350 crash test standards.
- Standard package: 10 lights, 10 bolts, 10 switch pins, and 1 socket.
- Bolt protectors available at extra cost.

B4DH-SL High Intensity Solar D-Cell LED

Solar Powered / Type B Barricade Light

The B4DH-SL is a dual Solar/D-cell high intensity barricade light which is powered by an extremely efficient solar panel, D-cell batteries, or a combination of both. Combining power supplies provides longer operational life and greatly reduces the frequency of battery changes thus increasing worker safety and reducing battery disposal. During daylight hours the solar panel charges the batteries, even in overcast conditions.

B4DH High Intensity D-Cell LED

- Exceeds I.T.E. and MUTCD standards.
- Tested in an approved independent laboratory to I.T.E. Type B requirements.
- ED uses 2 or 4 D-cell batteries (not included).
- Mono-directional lens with visor to eliminate sun glare.
- Three modes: Flashing/Dim, Flashing/No Dim, Off.
- Light dims 50% at night to extend battery life.
- Lenses molded from UV stabilized polycarbonate.
- Case is high impact polypropylene.
- **B4DH** standard package: 10 lights, 10 bolts, 10 switch keys, and 1 socket. Pkg. weight: 18 lbs.

TLL Series

6V LED Barricade Lights

- LED light source powered by heavy duty 6 volt battery.
- Exceeds ITE standards and MUTCD visibility specifications.
- Tested by a Coast Guard approved laboratory.
- Equipped with a photo cell to automatically turn on at dusk and off at dawn.
- Case is high impact polypropylene, battery contacts are made of corrosion resistant stainless steel.
- **TLL6S** - Flashing (**Type A**).
- **TLL8S** - Three selectable modes: Flash (**Type A**), Steady-Burn (**Type C**), or Off.
- Will operate on one or two 6 volt batteries (not included).
- Battery life: 90 - 120 days (w/2 new batteries).
- Hardware: 10 lights, 10 bolts, 10 switch pins, and 1 socket.
- Weight per carton: 17 lbs.

MODEL MODES

On/Off and
Mode Switches

Hardware
(Per Case of 10 Lights)

Accessories and Replacement Parts for D-Cell and 6V Barricade Lights

MODEL

DESCRIPTION

3-1/2"

AC4D-HARDWARE2

AC4D-WRENCH

20-013-02

PRO-B-CB

Barricade Lights - Sequential

ES4D - EcoSynchro™

Economical Sequential D-Cell Barricade Light

Increased Taper Recognition - 2009 MUTCD 6F.83

- Economical sequential warning lights provide for smooth and gradual traffic movement from one lane to another.
- Sequential warning lights are referenced in the 2009 MUTCD - Sect. 6F.83.
- When the lights deployed they give the visual impression of a single Type A intensity light source traveling a clear path along the taper from front to back.
- Flash rate: 60 pulses per minute.
- Deploys in any order - no master or slave, each light automatically detects it's position in the sequence.
- Photo cell automatically turns lights on at dusk and off at dawn.
- Continuous operation of about 165 days before the batteries need to be changed.
- Designed to maintain a constant light output as the battery voltage drops over time.
- Mono-directional flashing for nighttime use only.
- Operates on four D-Cell batteries (not included).
- Standard package includes 10 lights, 10 - bolts, 10 switch keys, and 1 socket.

WSCD - SynchroGUIDE™

Sequential 6V Barricade Light

- Sequential flashing warning lights provide for smooth and gradual traffic movement from one lane to another.
- Sequential lights are referenced in the 2009 MUTCD - Sect. 6F.83.
- Lights are lit continuously with a momentary increase in intensity to give motorists positive guidance through the work zone.
- Flashing mono-directional, can be used day or night.
- 6 volt circuit, will operate on one or two 6 volt batteries (not included).
- Deploys in any order - no master or slave, each light automatically detects it's position in the sequence.
- Steady-burns in low intensity mode and pulses momentarily to higher intensity keeping motorist in proper path and protecting work zone personnel.
- Standard package includes 10 lights, 10 - bolts, 10 switch keys, and 1 socket.

Pro-B-Lite™

Rechargeable Sequential Barricade Light

MODEL

DESCRIPTION

The Pro-B-LITE™ fits easily in the trunk of most vehicles. Trickle charging via a 12V outlet ensures continuous availability for rapid deployment in an emergency. Lights drop into the ProBase-5 charging tray (included) and make charge contact automatically.

V1000

Adjustable Tear-Away Safety Vest

Mic Clip and
Pencil Pocket

Size-adjusting
Side Straps

Optional Reflective
Message Patches

- Class 2 - ANSI/ISEA 107-2020
- Solid polyester fabric
- 2" reflective stripes
- **5 point Tear-Away design**
- Message provision on back
- Pencil pocket
- Zipper pocket
- Large inner pocket
- Adjustable - one size fits most

- Reflective 9" x 6"
- Many standard messages
- Ink color choices: black, blue, red,
and green
- Hook and loop attachment

Optional Reflective
Message Patches

ACCOUNTABILITY	HAZMAT
AIR OPERATION	INCIDENT
AIR SUPPLY	INCIDENT COMMAND
AMBULANCE	INCIDENT COMMANDER
ASSISTANT CHIEF	INFORMATION OFFICER
BATTALION CHIEF	LIEUTENANT
CAPTAIN	LOGISTICS
CHAPLAIN	MEDIA
CHIEF	MEDIC
COMMAND	OEM
COMMANDER ACCOUNTABILITY	OPERATION
CRASH RESCUE	OPERATIONS
DEPUTY CHIEF	OPS
DIRECTOR	PARAMEDIC
EMERGENCY MANAGEMENT	PIO
EMS	POLICE
EMS COMMAND	PUBLIC HEALTH
EMT	PUBLIC WORKS
EXISTING	REHAB
FIRE	RESCUE
FIRE - EMS	SAFETY
FIRE / EMS	SAFETY OFFICER
FIRE / MEDIC	SECURITY
FIRE CHIEF	SHERIFF
FIRE DEPT	STAGING
FIRE POLICE	TRIAGE
FIRE RESCUE	VICTIM ASSISTANCE
FIREFIGHTER	VOLUNTEER
FIRST RESPONDER	WATER SUPPLY

Custom messages available on request

V700 Series

Adjustable Tear-Away Public Safety Vest

Public Safety Vests meeting ANSI/ISEA 107-2020

Class 2 standards are specially designed to provide unrestricted access to equipment, weapons, and medical devices that may be worn at the waist.

- Constructed of comfortable mesh polyester material.
- **Five point Tear-Away** – shoulders, sides and front.
- Reflective stripes provide 360 degree visibility.
- Short in front design allows access to equipment belt.
- Adjustable side straps for custom fit.
- Available in blue, red, green, and orange trim.

V750 - Blue Trim

V760 - Red Trim

V770 - Green Trim

V780 - Orange Trim

V700 Series - Features

Vests - Class 3

V158 (Lime) V258 (Orange)

- Class 3 - ANSI/ISEA 107-2020
- Mesh polyester fabric
- 2" reflective stripes
- Pencil pocket
- Zipper pocket
- Zipper closure
- Sizes: Medium - 5XL

V155 (Lime) V255 (Orange)

- Class 3 - ANSI/ISEA 107-2020
- Mesh polyester fabric
- 2" reflective stripes
- Expandable radio pocket
- Pencil pocket
- Zipper pocket
- Large inner pocket
- Zipper closure
- Sizes: Small - 7XL

V275

- Class 3 - ANSI/ISEA 107-2020
- Orange & lime mesh polyester
- 2" reflective stripes
- Expandable radio pocket
- Pencil pocket
- Zipper pocket
- Large inner pocket
- Zipper closure
- Sizes: Medium - 5XL

V455

- Class 3 - ANSI/ISEA 107-2020
- Orange solid polyester fabric
- 2" reflective stripes
- Expandable radio pocket
- Pencil pocket
- Zipper pocket
- Large inner pocket
- Zipper closure
- Sizes: Medium - 5XL

VB155 (Lime) VB255 (Orange)

- Class 3 - ANSI/ISEA 107-2020
- Mesh polyester fabric
- 2" reflective stripes
- 5-point Tear-Away design
- Expandable radio pocket
- Pencil pocket
- Zipper pocket
- Zipper closure
- Sizes: Medium - 5XL

V555 (Lime) V655 (Orange)

- Class 3 - ANSI/ISEA 107-2020
- Mesh polyester fabric
- 2" reflective stripes
- 1/2" reflective bias trim
- Expandable radio pocket
- Pencil pocket, Zipper pocket
- Large inner pocket
- Zipper closure
- 4 metal grommets
- Sizes: Small - 5XL

*For sizing see page 43

- Class 2 - ANSI/ISEA 107-2020
- Solid front, mesh back
- 2" reflective stripes
- Expandable radio pocket
- Pencil pocket
- Zipper pocket
- Large inner pocket
- Zipper closure
- Sizes: Small - 5XL

- Class 2 - ANSI/ISEA 107-2020
- Mesh polyester fabric
- 2" reflective stripes
- Expandable radio pocket
- Pencil pocket
- Zipper pocket
- Large inner pocket
- Zipper closure
- Sizes: Medium - 5XL

- Class 2 - ANSI/ISEA 107-2020
- Mesh polyester fabric
- 2" reflective stripes
- V1500 (Lime), V1600 (Orange)
- 5 point Tear-Away design
- Hook & loop closure
- Size adjustable
 - Standard: Medium - 2XL
 - Jumbo: 3XL - 5XL

- Class 2 - ANSI/ISEA 107-2020
- Mesh polyester fabric
- 2" reflective stripes
- 5 point Tear-Away design
- Hook & loop Closure
- Sizes: Medium - 5XL

- Class 2 - ANSI/ISEA 107-2020
- Solid polyester fabric
- 2" High-Gloss reflective stripes
- Pencil, zipper, & expandable radio pockets
- Snap closure
- Sizes: Medium - 5XL

*For sizing see page 43

Vests - Class 2

- Class 2 - ANSI/ISEA 107-2020
- Mesh polyester fabric
- 2" reflective stripes
- Hook & loop closure
- Sizes: Medium - 5XL

- Class 2 - ANSI/ISEA 107-2020
- Mesh polyester fabric
- 2" reflective stripes
- Zipper closure
- Sizes: Medium - 5XL

- Class 2 - ANSI/ISEA 107-2020
- Mesh polyester fabric
- 2" reflective stripes
- Large inner pocket
- Outside zipper pocket
- Hook & loop closure
- Sizes: Medium - 5XL

- Class 2 - ANSI/ISEA 107-2020
- Mesh polyester fabric
- 2" refl. stripes (2 horizontal)
- Hook & loop closure
- Sizes: Medium - 5XL

*For sizing see page 43

- Class 2 - ANSI/ISEA 107-2020
- Solid polyester fabric
- 2" reflective stripes
- Pencil pocket
- Large inner pocket
- Outside zipper pocket
- Zipper closure
- Sizes: Medium - 5XL

Refl. Bias Trim Vests

Surveyors Vests

Reflective bias trim
for enhanced
nighttime visibility.

V210

- Meets ANSI/ISEA 107-2020 Class 2 requirements.
- Mesh polyester material.
- 2" reflective silver stripes with contrasting 1" border.
- 1/2" bias reflective trim for added nighttime visibility
- Expandable radio pocket, breast and pencil pockets, two outside pockets with flaps, and two inside pockets.
- Zipper closure.
- Four grommets.
- Sizes: Medium - 5XL

*For sizing see page 43

- Meets ANSI/ISEA 107-2020 Class 2 requirements.
- off mesh top with solid bottom.
- Snap front closure.
- 2" reflective silver stripes
- Two lower 8" x 14" pockets with hook & loop flap closure.
- Upper right pocket with hook and loop flap closure.
- Upper left pencil pocket.
- Available in orange (V210), or lime yellow (V310).
- Large 8" x 28" lower back map pocket with snap closure.
- Sizes: Medium - 5XL

V10

- Mesh polyester material
- 2" orange w/refl. silver stripes
- One size fits most

- Mesh polyester material
- 1" white reflective stripes
- One size fits most

- Mesh polyester material
- 3/4" lime reflective stripes
- One size fits most

Vests - Flame Resistant

- Class 2 - ANSI/ISEA 107-2020.
- Meets ASTM F1506 Arc test 4.6 cal/cm², NFPA 70E.
- Modacrylic mesh fabric: lightweight, breathable, and flame resistant.
- 2" fire resistant retroreflective stripes.
- Flame resistant hook and loop front closure.
- Standard pockets.
- Sizes: Med. - 5XL

**For sizing see page 43*

- Class 3 - ANSI/ISEA 107-2020.
- Meets ASTM F1506 Arc test 4.6 cal/cm², NFPA 70E.
- 2" fire resistant retroreflective stripes.
- Flame resistant hook and loop front closure.
- Modacrylic mesh fabric: lightweight, breathable, and flame resistant.
- Standard pockets. - Sizes: Med. - 5XL

**For sizing see page 43*

All vests feature modacrylic mesh fabric and our standard multiple pocket configuration: triple pencil pocket and breast pocket on the left side, single breast pocket on the right.

**Custom styles available, minimum order quantities may apply.*

P1000 Series

Class E Pants



- ANSI 107-2020 compliant Class E pants.
- ANSI Class 3 compliant when worn with Dicke Class 2 vests, t-shirts, or jackets.
- Drawstring waist with elastic.
- Pass through side pockets.
- Adjustable pant leg opening with heavy duty snaps for tight fit.
- Popular 4" triple trim reflective stripes.
- **P1100** and **P1200** feature washable polyester and combine a solid top half with a mesh bottom for added strength and comfort.
- **P1300** is mesh with horizontal and vertical stripes.

MODEL	DESCRIPTION	SIZES
1 P1100	Lime solid/mesh combo, 2" reflective stripes	S/M • L/XL • 2XL/3XL • 4XL/5XL
2 P1200	Orange solid/mesh combo, 2" reflective stripes	S/M • L/XL • 2XL/3XL • 4XL/5XL
3 P1300	Lime all mesh, 2" reflective stripes	S/M • L/XL • 2XL/3XL • 4XL/5XL



Solid top/mesh bottom (P1100 & P1200)

Sizing Charts

Sizing for all Dicke apparel

Vest Sizing		
Size	Chest	Length
Small	48-50	25
Medium	50-52	26
Large	52-54	27
X-Large	54-56	28
2X-large	56-58	28
3X-Large	58-60	29
4X-Large	61-63	29
5X-Large	66-68	30

T-Shirt Sizing		
Size	Chest	Length
Small	38-40	29
Medium	42-44	29
Large	46-48	30
X-Large	50-52	30
2X-large	54-56	31
3X-Large	58-60	31
4X-Large	62-64	32
5X-Large	66-68	33

Jacket/Parka Sizing	
Size	Chest
Small	46-48
Medium	48-50
Large	52-54
X-Large	54-56
2X-large	56-58
3X-Large	58-60
4X-Large	60-62
5X-Large	62-64

Pants Sizing		
Size	Waist	Inseam
S/M	32-46	28-30
L/XL	34-50	29-31
2XL/3XL	38-52	29-31
4XL/5XL	40-56	32-34

High Visibility safety wear has a limited life expectancy.
 Wearing new or like new garments increases the likelihood the user will be seen at greater distances. Those responsible for the care and inspection of these should note that actual lifetimes vary based upon exposure to the environment, normal use, misuse, handling, and cleaning. Proper inspection of the background and retro reflective materials including comparing to new garments will help to insure optimum daytime and nighttime visibility.



TS200 - Class 2

TS Series

T-Shirts - Long and Short Sleeve

T-shirts are made from comfortable wicking polyester material and are available in both orange and lime colors. T-shirts with reflective stripes meet ANSI/ISEA 107-2020 Class 2 and/or Class 3 specifications. All shirts have a front left breast pocket and most styles are available with long or short sleeves in Medium - 5XL. **TS29** and **TS39** are also available in Small. Due to ANSI background material square inch requirements, Small Class 2 & 3 T-shirts are not available. Medium Class 2 & 3 T-shirts are longer than non-reflective models in order to provide the required amount of background material.



TS19



MODEL	COLOR	ANSI CLASS	REFL STRIPES	SLEEVES
TS19	Lime	—	No	Short
TS29	Orange	—	No	Short
TS39	Lime	—	No	Long
TS49	Orange	—	No	Long
TS100	Lime	2	Yes	Short
TS200	Orange	2	Yes	Short
TS151	Lime	3	Yes	Short
TS251	Orange	3	Yes	Short



TS450 - Class 3

Shirts



PS100

PS Series

Polo Shirts - Class 2

- Meets ANSI/ISEA Class 2 requirements.
- 100% polyester breathable knit.
- Chest pocket with pen slot.
- Three button neck.
- 2" heat applied reflective silver stripes.
- Navy blue on the bottom front to hide dirt.
- Available in lime/navy and orange/navy color combinations.

- **PS100** - Lime/Navy (M - 5XL)
- **PS200** - Orange/Navy (S - 5XL)

*For sizing see page 43

PS200





SS150/SS250

Pull-Over Sweatshirts

- Meets ANSI/ISEA 107-2020 Class 3 requirements.
- Pull-over style with hood, made from 100% polyester fabric.
- Lined sleeves for easy pull-on and pull-off.
- Black lower front color prevents dirt and grime from showing.
- Hood is sewn flat at the crown providing comfort when worn with hard hat.
- Heavy duty stitching with rib knit cuffing.
- Front pouch pocket.
- 2" reflective silver stripes..
- **SS150** - Lime/Black
- **SS250** - Orange/Black
- Sizes: Medium – 5XL



SR10

Shin Reflectors

- Meets ANSI 107-2020 requirements.
- Lightweight lime polyester mesh.
- 2" reflective stripes, 360° pattern.
- Easy on/off hook and loop straps.
- Adjustable - one size fits all.



SC100

Knit Caps

- Soft acrylic knitted fabric.
- 360° strip of reflective polyester yarn for added visibility.
- Hi-viz lime color.
- One size fits all.



SZ150

Zipper Sweatshirts

- Meets ANSI/ISEA 107-2020 Class 3 requirements.
- Zipper style with hood.
- 100% polyester fabric.
- Lined sleeves for easy pull-on and pull-off.
- Black lower front color prevents dirt and grime from showing.
- Hood is sewn flat at the crown providing comfort when worn with hard hat.
- Front pouch pocket.
- Heavy duty stitching with rib knit cuffing.
- 2" reflective silver stripes.
- Sizes: Medium – 5XL

*For sizing see page 43

Bomber Jackets

Class 3



Bomber Jackets - Black Bottom

- Same features as J3201 but black on the bottom half of the jacket to reduce the appearance of dirt.
- **J3300** - Lime/black
- **J3400** - Orange/black
- Sizes: Small - 5XL

Bomber Jackets - Lime Bottom

- Jackets meet ANSI 107-2020 Class 3 standards.
- Dual orange/lime color to maximize visibility.
- Weather resistant polyurethane coated fabric.
- Zip-out drawstring hood.
- Fleece lined front pockets.
- Front radio pocket.
- Pencil pocket on sleeve.
- 2" silver stripes.
- **J3201** has a permanent liner.
- **J4211** features a removable lime polar fleece liner with 2" reflective stripes that may be worn as a separate Class 3 garment.
- Sizes: Medium - 5XL



J4211



All parkas and bomber jackets feature drawstring hoods that store in collar



J5200

Parka

- Meets ANSI 107-2020 Class 3 requirements.
- 2" wide reflective silver stripes.
- Weather resistant polyurethane coated fabric.
- Quilted inside liner, zip-out drawstring hood.
- Expandable outside breast pocket.
- Two large outside pockets have top flaps with hook and loop closure.
- Two large inside pockets and inside pencil pocket.
- Drawstring bottom cinches tight for warmth.
- Sizes: Medium - 5XL



FJ150

Fleece Jacket

- Meets ANSI/ISEA 107-2020 Class 3.
- 100% polyester hi-viz polar fleece.
- Front zipper.
- Two hand warmer pockets.
- Cell phone pocket.
- Black trim around waist and cuffs to hide dirt.
- Sizes: Medium - 5XL

*For sizing see page 43

Rain Wear

Jackets and Pants



RJ9000 - Rain Jacket

- ANSI/ISEA 107-2020 Class 3 compliant.
- Polyurethane coated 300 denier oxford polyester Fabric.
- Polyester and taffeta Lining.
- 2" silver reflective tape.
- Storm fly front with #8 two-way zipper and 5 snaps.
- Breathable fabric.
- Stitched and tape sealed seams for 100% waterproof protection.
- Attached hood stores in collar for added convenience.
- Full-vented mesh cape back with D-ring access.
- Two patch pockets with flap closures in front.
- Two additional side pockets located under the patch pockets.
- Inside left breast pocket.
- Elastic cuffs with hook & loop take-up straps on sleeves.
- 2 Mic tabs, radio pocket on left breast with flap closure.
- Sizes: Medium - 4XL

RP9000 - Standard Rain Pants

- ANSI/ISEA 107-2020 Class E compliant.
- Polyurethane coated 300 denier oxford polyester fabric.
- 2" silver reflective tape, breathable fabric.
- Stitched and tape sealed seams for 100% waterproof protection.
- Elastic waist with adjustable draw cord.
- Black bottom legs, pass through pockets w/snap.
- Hook & loop straps on cuffs for adjustable fit.
- Fly front with a center snap.
- Sizes: Medium - 4XL

RBP9000 - Bib Rain Pants

- Bib style version of our Standard Rain Pants.
- Elastic suspenders w/divider and release buckles.
- Large chest zippered pocket with 4 pen pockets.

*For sizing see page 43

Flags

18" and 24" mesh and solid vinyl flags, blaze orange color, are available with or without 3/4" round wood staffs. Mesh flags have cloth binding. Custom flags and printing also available.

MODEL	FLAG SIZE	FLAG MATERIAL	STAFF	MODEL	FLAG SIZE	FLAG MATERIAL	STAFF
-------	-----------	---------------	-------	-------	-----------	---------------	-------

18" and 24" square nylon reinforced vinyl flags come with a 3/4" diameter wood staff. Some models have a rigid stay sewn in which helps keep the flag fully open at all times. All flags with staffs comply with MUTCD emergency flagging requirements for red warning flags (6E.03 – Hand Signalizing Devices). Cloth tailgate flags have a wire loop for easy attachment to loads.

MODEL	FLAG SIZE	FLAG MATERIAL	STAFF
-------	-----------	---------------	-------

2010-18CW

16" x 16" orange vinyl flag with 1-1/2" wide lime refl. stripes. Wire loop stiffener at the top and weighted bottom. Used around transformers, switch-gears, substations, etc., to inform personnel where protective grounds are located.

36" x 36" orange and white sewn nylon airport flag with stitched pocket for pole mounting (max. 3/4" dia.). Meets FAA AC 150-5210-5C & AC 150-5200-18C standards. **3/4X50WD** - 50" wood handles are available.

24" X 24" orange vinyl flag with a 2" wide silver reflective bottom stripe, 36" wood staff.

18" x 18" orange nylon flag with "STOP" printed on both sides, lime/silver refl. stripes, and 30" pvc staff.

Bags

Sign System Bags

Designed to hold signs and stands, these bags are made of heavy duty vinyl and come with a webbing shoulder strap and zipper closure.

MODEL DESCRIPTION

Sign Bags

Protective bags for one roll-up sign. Made of heavy duty vinyl with a hook and loop closure carrying handle.

MODEL DESCRIPTION

Equipment Bags

Vinyl bags come with handle straps, shoulder strap, zipper closure, and outside pocket with hook and loop closure.

MODEL DESCRIPTION

Banners

Yellow vinyl banners are available non-reflective and Super Bright™ reflective with grommets in each corner.

MODEL DESCRIPTION

Pennants

MODEL DESCRIPTION

Plastic pennants are 8" wide, 12" long, and spaced 8-1/2" apart. Attached to a 100' white braided cord 100 lb. strength.

Sign Covers

MODEL SIZE

The 2009 MUTCD, Section 2C.02 Application of Warning Signs: *"...In situations where the condition or activity is seasonal or temporary, the warning sign should be removed or covered when the condition or activity does not exist..."*

- Convenient method of covering signs when not in use.
- Sign covers are made of durable reinforced black vinyl.
- Quickly attach to sign via stretchable elastic corner straps.
- Standard sizes: 36"x 36", 48"x 48", 24"x 48" and 36"x 48".
- Additional sizes available. Call for quote.

CC5B

Collapsible Cone Kits

- Meets both the NFPA 1901 and MUTCD 6F.64 standards.
- Rugged black rubber base, 8 lb. weight.
- 28" cones feature water-resistant solid nylon material in hi-viz orange for added visibility.
- 6" upper and 4" lower cone collars made of prismatic sealed surface retro reflective material.
- Storage bag with zipper top and convenient carry straps holds 5 collapsible cones.
- Sold only in 5 packs w/bag (42#).

PRG4A

Pocket Reference Guide

Help protect workers from construction work zone hazards. With continual traffic congestion, frustrated drivers, and deteriorating infrastructure, roadway work zone accidents have soared to an all-time high. There are solutions - insure that the right information is communicated and made available to each roadway worker exposed to danger. Positively guide motorists through work zones with proper equipment and placement. Bring work zones into compliance with Federal and State DOT requirements and OSHA standards.

Economical Job Aid for Technicians

- Based on the current Federal MUTCD.
- 80 thick, laminated, "field durable" pages.
- Quick reference charts and tables.
- Quick reference typical work zone drawings.
- Easy to use and easy application to roadways.
- Compact 7" x 3-5/8" size.

*Part number and content subject to change in the event of future MUTCD revisions

Typical Application Diagrams

Devices and Procedures

LM100 - Bottom Strap

- Meets OSHA requirements for ladder safety.
- Independent laboratory tested.
- Specially woven military specification canvas material with mildew inhibitors and wear indicator thread imbedded in the webbing.
- Reliable military specification hardware.

LMB - Storage Bag

- Heavy duty mesh bag stores and protects LM straps.
- Zipper closure.
- LMB - Bag only
- LMBH - Bag w/Hook

LM200 - Top Strap

- The Laddermate™ top strap provides an extra level of safety and stability when used with the LM100. LM200 secures the top of the ladder to a pole or strand.
- Meets OSHA requirements for ladder safety, laboratory tested.
 - Special red nylon webbing material.
 - Reliable military specification hardware.

Pruner Handles

Fiberglass and Wood

Fiberglass handles: Thick 1-1/4" diameter fiberglass tubing make these handles the strongest, lightest, and most durable professional pruner handles available. Special surface treatment prevents "blooming" of glass fibers.

Wood handles: Octagon milled 1-1/4" diameter Western Hemlock. All wood and fiberglass handles feature Interlocking seamless aluminum ferrules and mate with all standard attachments. Extensions have male and female ferrules, head sections have male ferrules.

Cone Holders

All steel, bolts to vehicle, and holds 5 cones.

CH155

MODEL	TYPE	DESCRIPTION
-------	------	-------------

For 18" & 28" cones

DICKE Safety Products

Since 1886

1201 Warren Avenue
Downers Grove, IL 60515
Ph: 877-891-0050
Fax: 630-969-3973

1845 Anunsen Street N.E.
Salem, OR 97301
Ph: 800-333-5641
Fax: 503-364-0340